



Handheld Color Ultrasound Scanner

Linear. Convex. Micro convex. Transvaginal

It is a handheld, pocket-sized ultrasound tool that provides real-time grayscale anatomic and color Doppler blood flow images with touch screen.



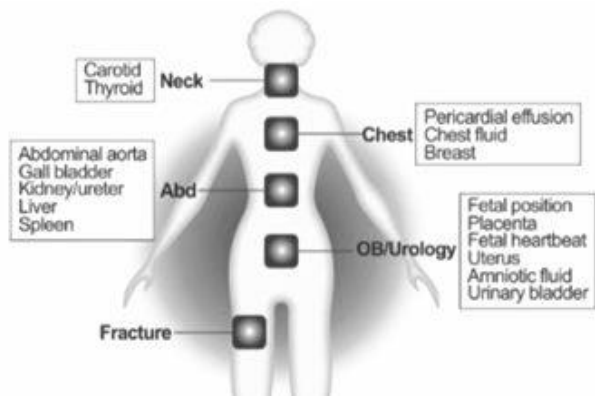
It is the preliminary screening tool for you—from patient to patient—within your primary, critical, or specialty care clinical environment.

Clinical Applications:

- Anaesthesia
- Line Placement (CVC, PICC)
- Pain management
- Point-of-Care (POC)
- Vascular Access
- Primary Care
- Emergency & ICU
- General Practitioners
- Urological
- OB/GYN
- Abdominal
- Pediatric Scanning



Product Description	Handheld Ultrasound Scanner
Monitor	6-inch LCD high-resolution (1280*720) full touch screen
Probe Type	80 elements - 128 elements (C-Scan Plus)
Frequency	Convex array 2-5MHZ / Linear array 5-10MHZ
Displaying Mode	B, M, C, B+B, B+M
Cine-loop	1024 Frames
Frame Rate	Convex:16fps / Linear:24ps
Depth	Convex: ≤200mm / Linear: ≤70mm
Grayscale	256 level
Gain	Convex: 0~150dB adjustable Linear: 0~120dB adjustable
Image Processing	Line smoothing, Frame smoothing, Transversal filter, Longitudinal filter, Sharpening, Gamma transformation, etc.
Power	Built-in battery(5400mAh) to support 2h for continuous scanning
Image Format	JPEG, DICOM
Language	Over 60 different language including English, Spanish, German etc.
Measurement	Length, Area, Arrow, Angle, Perimeter, Text.
Camera	5M auto focus
Wireless Connection	WIFI, BLUETOOTH,3G/4G (LTE, WCDMA/EDGE/GPRS/GSM)
Memory	64GB
Connection Interface	Micro USB2.0, HDMI,3.5mm headphone jack,
Operating System	Android
Printer	WIFI printer
File Management	Patient file & image file
Cloud	Cloud image storage, cloud file management, standard API & SDK interface, Information sharing platform
Technical Training	Online and offline tutorial, self-built online training material
Remote Software Update	Yes
Size	165*85*23mm
Weight	Convex & Micro convex:570g / Linear:550g /Transvaginal: 590g
Standard Configuration	Main unit (Transducer included): 1pc USB wire_____1pc Adapter_____1pc Carrying bag_____1pc Bag of gel(20g)_____1pc



Benefits:

1. Detect pericardial effusion, chest fluid or internal bleeding at ER or in ambulance, enabling prompt initiation of treatment
2. View fetus as they grow
3. Detect fetal heart beats
4. Monitor the amount of Amniotic fluid during delivery
5. Find plaque in Carotid, avoid stroke before it strikes
6. Place lines in veins with visual confidence
7. Find nodules in thyroids, livers or breasts during screening
8. Monitor stones in kidneys, gall bladders and bladders
9. Verify bone fractures without X-ray

